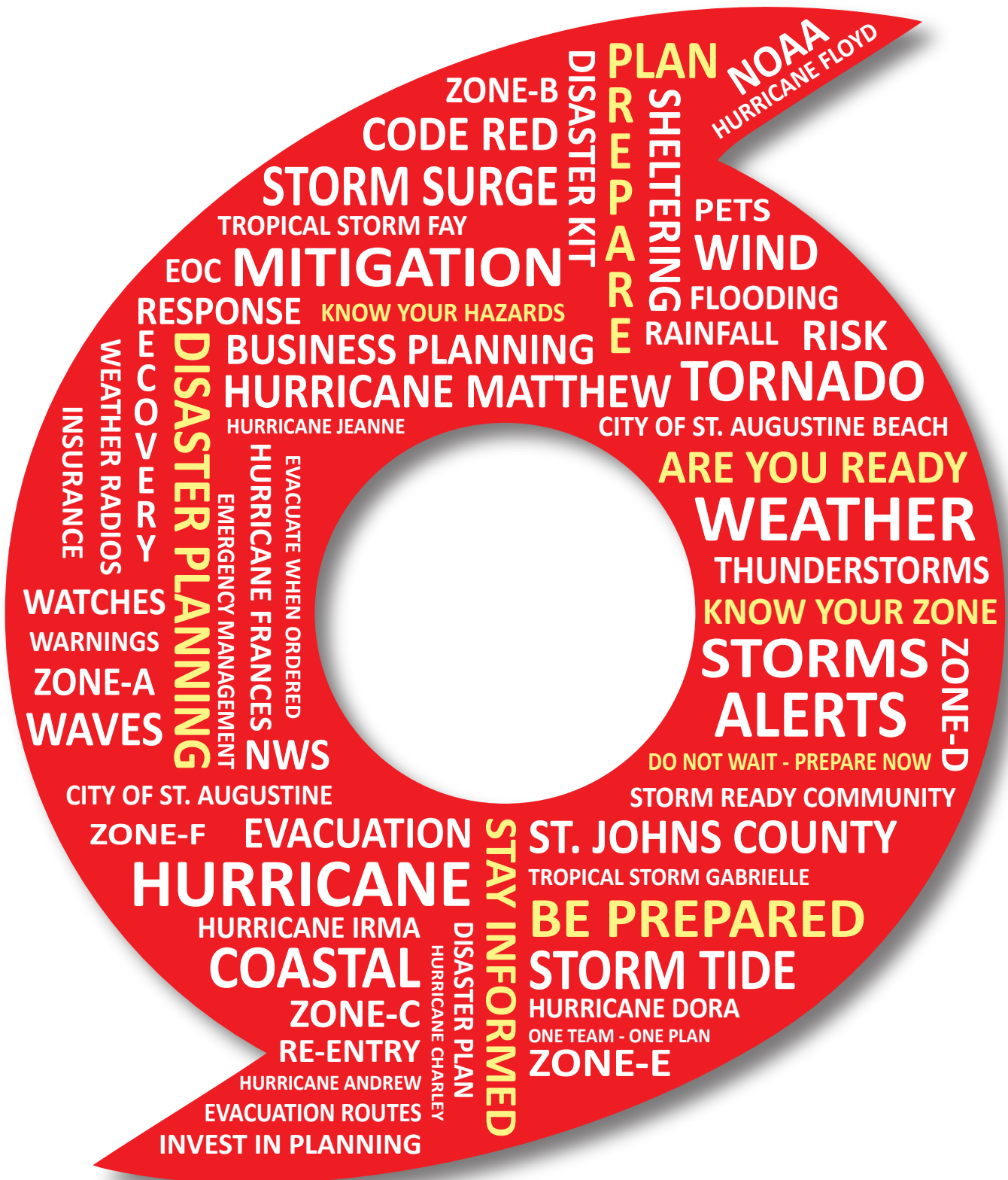


St. Johns County Emergency Management HURRICANE PREPAREDNESS GUIDE

OFFICIAL GUIDE FOR ST. JOHNS COUNTY



HURRICANE PREPAREDNESS GUIDE

contents

Contents	2
History of Hurricanes in St. Johns County	3
Weather	
- Thunderstorms, Tornadoes, Tornado EF-Scale	4
- Tropical Storms, Storm Surge, Tides, Waves, Freshwater	5
- Hurricanes, Saffir-Simpson Hurricane Wind Scale	6
Preparedness	
- Disaster Planning	7
- Business Planning	8
- Being Prepared, Know Your Zone, Disaster Kit, Document Checklist	9
- Flood Insurance	10
- Being Informed, NOAA Weather Radio, Code Red, Local Radio and Television Stations	11
- A Message from the City of St. Augustine and the St. Augustine Beach Police Department	12
- Sheltering Options	13
- Transportation	14
- St. Johns County Evacuation Assistance Registration Form	15-16
Before the Storm	
- Preparing your Home, Manufactured Home, Mobile Home and Boat	17-18
- St. Johns County Sandbag Operations	18
Evacuation and Sheltering	
- Mandatory Evacuation, Curfew, Vehicle Traffic, Travel	19
- Designated Evacuation Routes for St. Johns County	20
- FDOT Emergency Shoulder Use, What If I Don't Evacuate	21
- Sheltering During a Disaster, General Shelter Supply Kit	22
- General Shelters and Locations	23
- Pet Friendly Shelters, Pet Friendly Shelter Supply Kit, Pets Allowed at Shelters	24
- Special Medical Needs Shelters, Special Medical Needs Shelter Supply Kit	25
Recovery	
- ReEntry, After the Storm	26
- St. Johns County Debris Operations	27
- Communicating During an Emergency, Beaches Energy Services	28
- Florida Power & Light / FPL	29
- Jacksonville Electric Authority / JEA	30
St. Johns County Hurricane Evacuation Zones Map	31

St. Johns County Hurricane Impacts

St. Johns County residents have experienced many storms throughout history. This is a brief summary of hurricanes that have impacted our community since 1964.



Hurricane Dora - September 1964

Hurricane Dora was the first hurricane to impact northeast Florida in at least 79 years. Hurricane Dora came on shore in St. Augustine with winds reported at 110 mph and produced 12' tides. Hurricane Dora made landfall in St. Augustine on September 10th as a Category-2 Hurricane. - Name Retired -

Hurricane Floyd - September 1999

Hurricane Floyd will be most remembered in the United States for its rainfall. The combination of Hurricane Floyd and a frontal system over the eastern United States produced widespread rainfall and caused widespread flooding, particularly in North Carolina. Hurricane Floyd made landfall near Cape Fear, North Carolina on September 16th as a Category-2 Hurricane. Although St. Johns County felt the effects of Hurricane Floyd as it tracked parallel to the Florida Coastline, it did NOT make landfall in St. Johns County. - Name Retired -



Hurricane Charley - August 2004

Hurricane Charley was the first of four hurricanes to impact Florida during the 2004 Hurricane Season. Hurricane Charley made landfall with maximum winds near 150 mph on the SW Coast of Florida, just north of Captiva Island. An hour later, Charley's eye passed over Punta Gorda. Charley crossed central Florida and was still of hurricane intensity when its center cleared the NE Coast of Florida near Daytona Beach. Although St. Johns County was affected by Hurricane Charley, it did NOT make landfall in St. Johns County. - Name Retired -

Hurricane Frances - September 2004

Hurricane Frances made landfall near Stuart, Florida with 105 mph maximum winds. Though Hurricane Frances was not as strong as Charley, its slow forward motion remained off the Florida coast for about 24-hours. Heavy rains flooded grounds already saturated by Hurricane Charley. Although St. Johns County was affected by Hurricane Frances, it did NOT make landfall in St. Johns County. -Name Retired -



Hurricane Jeanne - September 2004

The center of Hurricane Jeanne crossed the Florida coast near Stuart, virtually the same spot Hurricane Frances had come ashore three weeks earlier. At time of landfall, maximum winds were estimated to be near 120 mph. The greatest impact from Hurricane Jeanne was the immense rainfall produced. Damage was difficult to isolate in Florida as much destruction was already present from Hurricanes Charley and Frances just weeks earlier. Although St. Johns County was affected by Hurricane Jeanne, it did NOT make landfall in St. Johns County. - Name Retired -

Hurricane Matthew - October 2016

Matthew approached the east coast of Florida October 6th. Hurricane Matthew weakened into a Category-3 hurricane by 1:00 am on October 7th, and was located approximately 140 miles SE of St. Augustine. Impacts were felt throughout our County all that day. Hurricane Matthew made its closest approach to St. Johns County when the eye's center was just 31 miles from Summer Haven. Although St. Johns County was affected by Hurricane Matthew, it did NOT make landfall in St. Johns County. -Name Retired -



Hurricane Irma - September 2017

Hurricane Irma made two Florida landfalls, first in the Keys and another near Marco Island. Hurricane Irma brought floodwaters that didn't peak in some Florida rivers until two to three days later. These floodwaters also set new high water records. Peak water levels brought widespread flooding in Hastings and Flagler Estates which continued for more than 2 weeks. Although St. Johns County was affected by Hurricane Irma, it did NOT make landfall in St. Johns County. - Name Retired -

THUNDERSTORMS

What is a Thunderstorm?

A thunderstorm is a local storm produced by cumulonimbus clouds accompanied by lightning and thunder, often containing heavy rain, and sometimes strong winds and hail.

Severe Thunderstorm Watch

Is issued by the National Weather Service when conditions are favorable for the development of severe thunderstorms in and close to the watch area. A severe thunderstorm by definition is a thunderstorm that produces hail one inch or larger in diameter and / or winds that equal or exceed 58 mph.

Severe Thunderstorm Warning

Is issued by the National Weather Service when either a severe thunderstorm is indicated by the weather radar or a spotter reports a thunderstorm producing hail one inch or larger in diameter and / or winds that equal or exceed 58 mph; therefore, people in the affected area should seek safe shelter immediately. Severe thunderstorms can produce tornadoes with little or no advance warning.

Avoid the Threat

- If thunderstorms approach, consider postponing outdoor activities.
- Monitor the weather. Look for signs of a developing storm such as darkening skies, flashes of lightning, or increasing winds.
- Get to a safe place. If caught outside, do not stand under trees, in open areas, such as the beach or golf course, or in any type of water. If shelter is not available, squat very low to the ground in a low area if possible. Do not lie flat on the ground, your goal is to minimize contact with the ground.

TORNADOES

What is a Tornado?

A tornado is a narrow, violently rotating column of air that extends from the base of a thunderstorm to the ground. Because wind is invisible, it is hard to see a tornado unless it forms a condensation funnel made up of water droplets, dust and debris. Tornado size can vary depending on the weather situation. Tornadoes are rated on the EF-Scale.

Tornado Watch

Is issued by the National Weather Service when conditions are favorable for the development of tornadoes in and close to the watch area. Watches are usually issued for a duration of 4 to 8 hours. They are normally issued well in advance of the actual occurrence of severe weather.

Tornado Warning

Is issued by the National Weather Service when a tornado has been sighted or indicated by weather radar. A Tornado Warning can be issued without a Tornado Watch already being in effect.

Avoid the Threat

- If a Warning is issued or threatening weather approaches move to your pre-designated safe room, a small room nearest the center of the structure away from windows.
- Gather blankets to cover yourself with - this will help protect you from flying debris.

TORNADO EF-SCALE

EF-SCALE	CLASS	WIND SPEED mph	WIND SPEED km/h	DESCRIPTION
EF-0	weak	65-85	105-137	Gale
EF-1	weak	86-110	138-177	Moderate
EF-2	strong	111-135	178-217	Significant
EF-3	strong	136-165	218-266	Severe
EF-4	violent	166-200	267-322	Devastating
EF-5	violent	> 200	> 322	Incredible

ENHANCED FUJITA SCALE | NATIONAL OCEANIC AND ATMOSPHERIC ADMINISTRATION

What is a Tropical Storm?

- A tropical storm is a tropical cyclone that has maximum sustained surface winds ranging from 39-73 mph (34 to 63 knots).
- A tropical cyclone is a low pressure system (not associated with a front) that develops over tropical and sometimes sub-tropical waters and has organized deep convection with a closed wind circulation around a well defined center.

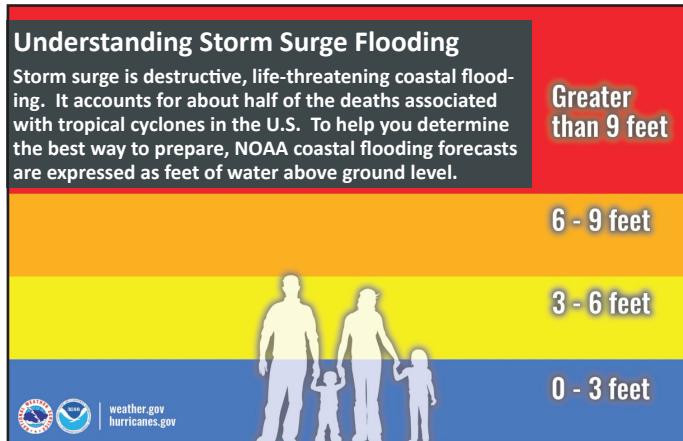
Tropical Storm Watch

An announcement that tropical storm conditions (sustained winds of 39 - 73 mph) are possible in the specified area within 48 hours is issued by the National Hurricane Center.

Tropical Storm Warning

An announcement that tropical storm conditions (sustained winds of 39 - 73 mph) are expected somewhere in the specified area within 36 hours is issued by the National Hurricane Center.

TROPICAL STORMS



What is Storm Surge?

Water level rise on land as a result of an approaching tropical system. Storm surge is water that is pushed onshore.

STORM SURGE

Storm Surge Watch

Is issued by the National Hurricane Center when there is the possibility of life-threatening inundation from rising water moving inland from the shoreline generally within 48 hours. The watch may be issued earlier when other conditions are expected to limit the time available to take protective actions for surge.

Storm Surge Warning

Is issued by the National Hurricane Center when there is a danger of life-threatening inundation from rising water moving inland from the shoreline generally within 36 hours. The warning may be issued earlier when other conditions are expected to limit the time available to take protective actions for surge.

Tides

Water levels rise and fall along the coast every day due to the gravitational pull of the moon and sun. The tide not only affects the Atlantic Ocean, it impacts water levels in the Intracoastal Waterway and St. Johns River. Hurricanes frequently move slowly and as a result, as the hurricane passes or makes landfall, we will likely experience more than one high tide cycle increasing the amount and height of the water.

TIDES

Waves

Breaking waves contribute to the water level rise through wave run-up and wave setup. Wave run-up is when a wave breaks and the water is pushed onto the beach. Wave setup occurs when waves continually break on the beach and the water from the run-up begins to pile up on the coast because it cannot flow back out into the ocean. The result is the water level rises as the hurricane approaches, bringing larger waves pushing even more water onshore.

WAVES

Freshwater

The St. Johns River is tidally influenced and flows north towards the Atlantic Ocean. As a hurricane approaches it may "back-up" the river, slowing down its flow into the Atlantic Ocean. The water in the river begins piling up along the shoreline and spilling over the banks into homes and streets.

FRESHWATER

HURRICANES

What is a Hurricane?

A hurricane is a type of storm called a tropical cyclone which forms over tropical or subtropical waters. A tropical cyclone is a rotating low-pressure weather system that has organized thunderstorms but no fronts (a boundary separating two air masses of different densities). Tropical cyclones with maximum sustained surface winds of less than 39 mph are called tropical depressions; those with maximum sustained winds of 39 mph or higher are called tropical storms; and when a storm's maximum sustained winds reach 74 mph, it is called a hurricane.

Hurricane Watch

An announcement that sustained winds of 64 knots (74 mph or 119 km/hr) or higher are possible within the specified area in association with a tropical, subtropical, or post-tropical cyclone. Because hurricane preparedness activities become difficult once winds reach tropical storm force, the hurricane watch is issued 48 hours in advance of the anticipated onset of tropical storm force winds.

Hurricane Warning

An announcement that sustained winds of 64 knots (74 mph or 119 km/hr) or higher are expected somewhere within the specified area in association with a tropical, subtropical, or post-tropical cyclone. Because hurricane preparedness activities become difficult once winds reach tropical storm force, the warning is issued 36 hours in advance of the anticipated onset of tropical-storm-force winds. The warning can remain in effect when dangerously high water or a combination of dangerously high water and waves continue, even though winds may be less than hurricane force.

SAFFIR-SIMPSON HURRICANE WIND SCALE

FOR MORE DETAILED INFORMATION VISIT: www.nhc.noaa.gov/aboutsshws.php

CATEGORY 1

Sustained Winds: 74-95 mph / 64-82 kt / 119-153 km-hr

- **Very dangerous winds will produce some damage:** Well constructed frame homes could have damage to roof, shingles, vinyl siding and gutters. Snapped tree branches. Power outages likely.

CATEGORY 2

Sustained Winds: 96-110 mph / 83-95 kt / 154-177 km-hr

- **Extremely dangerous winds will cause extensive damage:** Well constructed frame homes could sustain major roof and siding damage. Trees snapped or uprooted. Near total power loss expected.

CATEGORY 3

Sustained Winds: 111-129 mph / 96-112 kt / 178-208 km-hr

- **Devastating damage will occur:** Well built framed homes may incur major damage or removal of roof decking and gable ends. Damaged trees blocking roads. Utilities unavailable for days or weeks.

CATEGORY 4

Sustained Winds: 130-156 mph / 113-136 kt / 209-251 km-hr

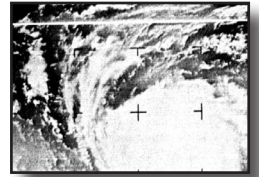
- **Catastrophic damage will occur:** Well built framed homes can sustain severe damage with loss of roof and / or some exterior walls. Trees and power poles down. Most of area will be uninhabitable.

CATEGORY 5

Sustained Winds: 157 or > mph / 137 or > / 252 or > km-hr

- **Catastrophic damage will occur:** High percentage of framed homes destroyed. Fallen trees and power poles will isolate residential areas. Power outages will last weeks - months. Area uninhabitable.

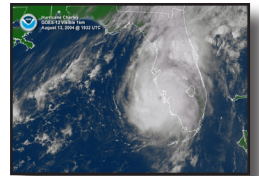
EVACUATIONS ARE ORDERED BY ZONE - DO YOU KNOW YOUR ZONE



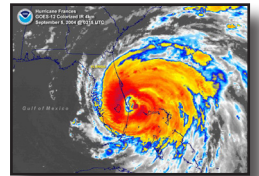
HURRICANE DORA
SEPTEMBER 1964



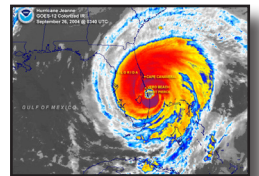
HURRICANE FLOYD
SEPTEMBER 1999



HURRICANE CHARLEY
AUGUST 2004



HURRICANE FRANCES
SEPTEMBER 2004



HURRICANE JEANNE
SEPTEMBER 2004



HURRICANE MATTHEW
OCTOBER 2016



HURRICANE IRMA
SEPTEMBER 2017

DISASTER PLANNING

Emergency Supply Kit

Ensure you and your family are prepared before a disaster strikes. If our community is impacted you may lose access to basic services, such as power and water. Access to essentials like food and water may be limited.

Stock up on essentials and prepare your emergency supply kit now.

Evacuations

Think Ahead about Evacuations

If you are ordered to evacuate ...
Where will you go?
How will you get there?

Depending on the storm, residents may only need to move further inland.

Often 10 miles is enough.

Think 10s of miles, not 100s of miles.

Your Disaster Plan

As residents of a coastal community, we must always be aware of our vulnerability to hurricanes. If disaster strikes are you ready? Is your family ready? Is your business ready?

Visit the following websites for additional information on Disaster Planning.

St. Johns County Emergency Management
www.sjcemergencymanagement.org

Insurance Institute for Business & Home Safety
<https://disastersafety.org/ibhs-business-protection>

Federal Emergency Management Agency
www.fema.gov/areyouready

Contact Information

Along with family members and friends, be sure to include your banking, insurance, and medical contacts. Include additional numbers that are important to you should you be away from home for an extended period of time.

Keep all contact information up-to-date in a small note book for easy access should you be ordered to evacuate.

Know Your Risk

Do you live in a Hurricane Evacuation Zone?

Visit the St. Johns County Emergency Management website and click the "My Evacuation Zone" link, enter your address, and Know Your Zone.

Do You Have a Special Medical Need?

If you or a family member have a disability or special medical need, additional considerations must be addressed when planning, evacuating, and sheltering.

Do not wait until the last minute.

Plan Ahead - Be Prepared

BUSINESS PLANNING

Businesses are the backbone of our economy. One of the quickest ways to return our community to a sense of normalcy is by getting our local businesses and industry back up and running. When businesses close down following a disaster, up to 40% never reopen. Small businesses are particularly at risk because they may have all operations in one location that is damaged or destroyed. There is no way to completely remove the risk of a disaster, but having a Business Continuity Plan can help prepare your business for the hazards you may face.

Why is a Business Continuity Plan Important

Taking proactive steps in advance is your best option for mitigating impacts. It will help reduce your losses and interruption of services. Being prepared gives you a competitive advantage as well as demonstrates a commitment to your community. Your Business Continuity Plan can be as simple, or complex as you desire. Focus on the basics and work from there.

Your Plan - Where to Begin

- Write down your Plan
- Include several back-up options
- Establish a schedule for Plan updates
- Develop a checklist to expedite implementation
- Secure documents and sensitive information
- Build financial reserves in the event of disruption
- Review insurance policies annually
- Establish an Emergency Planning Team
- Practice | Train your Emergency Plan
- Build a Disaster Supply Kit for your business
- Have a NOAA Weather Radio

Invest in Planning

An investment in planning today will not only help protect your business investment and your livelihood, but will also support your employees, customers and stakeholders, the community and local economy.

Now is the time to take advantage of the many resources and tools that are available to guide you through your Business Continuity and Disaster Planning.

Business Planning websites:

Florida Disaster.biz

www.FloridaDisaster.biz

Insurance Institute for Business & Home Safety

<https://disastersafety.org/ibhs-business-protection>

Prepare My Business

www.PrepareMyBusiness.org

Ready.gov

www.ready.gov/business



AVOID BEING A STATISTIC

- Know Your Risks
- Make a Successful Plan
- Get Involved Locally
- Stay Informed
- Use Available Resources
- Ask Questions

BEING PREPARED

As residents of a coastal community we are often reminded of our vulnerability to hurricanes. Every family and business in St. Johns County should be prepared. Do not wait until a storm is approaching to begin your preparedness. Being prepared is having all in readiness **before** Hurricane Season begins on June 1st.

BEING PREPARED FOR A DISASTER IS LIKE BEING PREPARED FOR ANY OTHER IMPORTANT EVENT IN LIFE

KNOW YOUR ZONE

Residents of St. Johns County are evacuated by **zone** - so it is important you Know Your Zone.

- Hurricane Evacuation Zones define the areas that need to evacuate. Each zone is vulnerable to different levels of storm surge.
- Along the Atlantic coastline are evacuation zones A, B, C, D and E.
- The coastal counties of NE Florida (Nassau, Duval, **St. Johns** and Flagler) have added an additional evacuation zone, Zone F.

To find your evacuation zone, visit our website at: www.sjcemergencymanagement.org

UNDERSTANDING HURRICANE EVACUATION ZONES

- Along the St. Johns River, Zone F represents a separate hazard comprised of low areas, or areas subject to flooding under specific conditions. Zone F in St. Johns County includes the lower lying areas on the western edge of the county along the St. Johns River, including portions of Hastings, Flagler Estates, Picolata and Wards Creek.

St. Johns County
My Evacuation Zone Locator

BUILD AN EMERGENCY DISASTER KIT

In the event of an emergency, you will need access to food, water, and essential items for several days. Gather supplies, place in airtight bags and store in easy to access containers.

PRE-HURRICANE SEASON PREPARATIONS

Disaster Kit Supplies

- Water - One gallon per person per day for 3-5 days
- Non-perishable foods / Manual can opener
- Specialty Items such as baby food, formula and diapers for infants; depends for the elderly; specialty foods for diabetic diets should also be included.
- Prescriptions / Medications
- Clothing - Including rain gear and sturdy shoes
- First Aid Kit
- Sanitation Supplies - wipes, garbage bags
- Personal Hygiene Items
- Flashlights and extra batteries
- Radio - Battery operated or hand crank
- Electronics and chargers - Cellphones, tablets, laptops, etc.
- Activities - Books, cards, games, toys
- Cash - Banks and ATM's may not be available
- Any additional items you or your family may need
- Pet Supplies - At least 3-5 days of food, water and medications for your pets

REVIEW YOUR NEEDS EVERY YEAR AND UPDATE YOUR KIT AS YOUR FAMILY'S NEEDS CHANGE.

Document Checklist

BRING ALL DOCUMENTS THAT WOULD BE DIFFICULT OR IMPOSSIBLE TO REPLACE IF LOST OR DESTROYED

- Drivers License / Picture ID / State Issued ID
- Cash / Credit cards / Debit cards
- Important telephone numbers and emergency contacts
- Medical Records
- Prescription information
 - medication, dosage, refills
- Doctors' names and telephone numbers
- Insurance Documents - Business, Home, Flood, Vehicle
 - policy numbers, policy types
 - household inventory; dvd, photo, video
- Banking / Creditor information and contact numbers
- Documents
 - adoption, death, divorce, marriage certificates
 - copies of wills
 - home, property, vehicle titles
 - passports





FEMA



NATIONAL FLOOD INSURANCE PROGRAM

No home is completely safe from potential flooding. Flood insurance can be the difference between recovering and being financially devastated. Just one inch of water in a home can cost more than \$25,000 in damage—why risk it?

“Nobody ever thinks it’s going to be their house.”



Visit FloodSmart.gov

Low-risk doesn’t mean no risk. More than 20% of flood claims come from properties outside high-risk flood zones. This hurricane season, make sure you’re prepared



30 DAYS



Visit FloodSmart.gov

That’s the number of days it takes for flood insurance to go into effect. Don’t wait for the next storm to think about purchasing flood insurance. Go to Floodsmart.gov to learn about purchasing flood insurance today!

GET PREPARED




Visit FloodSmart.gov

Is your family prepared for hurricane season? Add purchasing flood insurance to your to-do list this week.

Make sure you are financially prepared for flooding.



GET FLOOD INSURANCE



With flood insurance, you’ll always be prepared for a rainy day. Flood insurance can pay regardless of whether or not there is a Presidential Disaster Declaration. Learn more at FloodSmart.gov


Just 1 inch of water can cause \$25,000 of damage to your home.

GET FLOOD INSURANCE




Flooding can happen anytime, anywhere. Visit the St. Johns County Flood Zone Viewer: www.gis.sjcf.us/floodviewer to learn about your flood risk.


Is your insurance portfolio complete?



Insurance

- Auto
- Home
- Flood

GET FLOOD INSURANCE



Homeowners insurance does not typically cover flood damage. There are over 28,000 active flood insurance policies in St. Johns County, are you one of them? Protect the life you’ve built by purchasing Flood Insurance, go to Floodsmart.gov to learn more.

BEING INFORMED



The NOAA Weather

Radio is the National Weather Service's direct link to the public. Weather information is broadcast 24-hours a day. Broadcasts include severe weather watches and warnings, as well as routine forecasts. The Specific Area Message Encoder (SAME) allows weather radios to be programmed to warn only for specific locations.

The frequencies for Weather Alert Radios in St. Johns County are:

162.425 MHz if you are located South of International Golf Parkway

162.550 MHz if you are located North of International Golf Parkway

SAME number for St. Johns County is: **12109**



Code Red gives Officials the ability to deliver emergency telephone notifications to the entire county - or targeted areas. Code Red can be used for a variety of events, such as fires, gas leaks and hazardous weather.

Who should register:

- Businesses
- Individuals with unlisted phone numbers
- Individuals who have changed phone numbers or moved within the past year
- Individuals who use a cell phone as their primary home phone

For more information and to register for Code Red, visit the St. Johns County Sheriff's Office website at: www.sjso.org/?page_id=5403

LOCAL RADIO STATIONS

- WFCF Flagler College Radio | 88.5 FM
- WFOY Newstalk | 102.1 FM
- WOKV Jacksonville | News 104.5 FM
- WSOS Ponte Vedra | 95.7 FM
- WSOS St. Augustine | 103.9 FM - 1170 AM
- WYRE | Beaches 105.5 FM

LOCAL TELEVISION STATIONS

- Action News Jax - CBS47 / Fox30
- First Coast News - NBC12 / ABC25
- News4Jax - WJXT4 The Local Channel
- St. Johns County Government Television



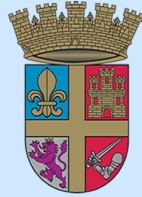
Be Prepared. Get Connected.

*When emergencies happen
where do you get local information?*

Public Works

- Debris Pickup •
- Solid Waste •
- Water/Sewer •
- Wastewater •
- Streets •

904.825.1040



CITY OF
ST. AUGUSTINE
EST. 1565

@CityStAug

@CityStAugFire

@CityStAugMarina

@STAUGPD



Public Safety

Fire Department
904.825.1098

Police Department
904.825.1074

Non-Emergency



info@CityStAug.com

www.CityStAug.com



ST. AUGUSTINE BEACH POLICE DEPARTMENT

Chief Robert A. Hardwick



The SABPD wants you to be prepared for any and all natural disasters. Don't wait until the last minute, stock up on supplies, make sure your personal affairs are in order, protect important paperwork, and make sure you have a full tank of gasoline. Don't put yourself, your family, or our community at risk. Follow all instructions of your local authorities and continuously monitor all media resources.

Important Resources During and After a Natural Disaster

In Case of an Emergency

St. Augustine Beach Police Department
Emergency: Dial 911
Non-Emergency: 904-471-3600

Trash | Debris Pick-Up | Road Damage

Public Works: 904-471-1119

Hurricane Updates | Shelter Locations
Bridge Closing Information

General Information

City of St. Augustine Beach
www.staugbch.com or 904-471-2122

Emergency Operations Center (EOC)
www.sjcemergencymanagement.org or 904-824-5550

WWW.SABPD.ORG



SHELTERING OPTIONS

Stay Outside the Evacuation Area

If possible, stay with family or friends outside the evacuation area. Shelters are crowded and noisy, and do not offer the comforts of home.

Depending on the storm, residents may only need to move further inland. Sometimes 10 miles is enough. Think 10s of miles, not 100s.

Stay at a General Shelter

If it's not possible for you to stay with family or friends outside the designated evacuation area, general shelter locations will be announced once an evacuation order has been issued. **Pre-registration** is not required unless you need transportation assistance.

Stay at a Pet Friendly Shelter

If you plan to shelter with your pet, you will need to go to one of our pet friendly shelters. Once an evacuation order has been issued and the shelter locations are announced, proceed to a shelter. **Pre-registration** is not required unless you need transportation assistance.

Stay at a Special Medical Needs Shelter

The Special Medical Needs Shelter may be appropriate for you if you need electricity for medical equipment, or you need oxygen therapy. **Pre-registration is required** for the Special Medical Needs Shelter.

If you are assigned to a Special Needs Shelter, you need to be aware that **specialized medical care is not available**. Staff are there to provide assistance only, not for providing complex care. If you are under the care of a doctor or home health care agency, please discuss your sheltering plans with them.

St. Johns County Shelters

The following services are **not available at Evacuation Shelters in St. Johns County**.

- **Dialysis Treatments** - There will be no dialysis treatments at Shelters
- **Hospital Beds** - Not available
- **Hoyer Lifts** - Not available
- **Tracheotomy Patients** - Suctioning equipment is not available
- **Ventilator Patients** - Shelters **do not** have the capability to support ventilator patients

If your health requires this level of advanced care, you must arrange to stay at a facility that can accommodate your complex medical needs.

Stay at a Hospital / Medical Facility

If your medical condition is greater than the level of care available at the Special Medical Needs Shelter, or if you require hospitalization or skilled medical assistance, you will need to speak with your physician or medical provider to arrange a safe location, which may include a hospital or other medical facility, outside the evacuation area.

NOT ALLOWED IN ANY SHELTER

Alcoholic beverages, illegal drugs or tents are not allowed at Shelters.

FIREARMS | WEAPONS ARE NOT PERMITTED

Shelter Note

Not all shelters will open for every evacuation. Please monitor local radio and television stations, or contact St. Johns County Emergency Management at (904) 824-5550 to find out which shelters are open when an evacuation order is given.

Shelter openings are also available on our website: www.sjcemergencymanagement.org/shetopen.html

TRANSPORTATION

The Evacuation Assistance Program provides evacuation assistance to those individuals who live at home and have no other options available to them. You **must** pre-register if you need transportation to a shelter.

Transportation Registration

- Transportation is available for individuals who need transportation to a General, Pet Friendly, or Special Medical Needs Shelter. Pre-registration **is required** if you need Transportation Assistance.
- Registration for the Pet-Friendly Shelters **is not required unless** you need Transportation Assistance. Pet owners are required to stay with and care for their pets. You **may not** drop off your pet and leave.
- As a general rule, pets will be transported with their owners.
- All animals must be transported and housed in a sturdy plastic or metal cage / transport device. No cardboard or partly enclosed carriers will be allowed.

Special Transportation Requests

Transportation is provided to and from shelters only. If you need transportation to a specialty facility, you must pre-arrange transport prior to Hurricane Season.

Transportation During an Evacuation

In the event of an evacuation, you will be contacted by the Emergency Operations Center with your assigned pick-up time. You will be given as much advanced notification as possible to allow you to prepare for evacuation. However, it is **important** to understand that if you choose not to evacuate at your assigned time resources may not be available to return to pick you up at a later time.

Be Ready for Transport

Once contacted, please gather your shelter supplies and have them ready by the door. If you have a pet that is evacuating with you, have your pet shelter supplies ready also.

Each individual will be allocated 20 square feet in General and Pet Friendly Shelters and 60 square feet in the Special Needs Shelters. Please prepare and pack your supplies accordingly. Tip: Tape out a 4ft x 5ft (or 6ft x 10ft for Special Needs) area at home and see if you can place yourself and all of your items in the “box”. If not, you need to re-think, and repack, your disaster kit.



IMPORTANT NOTE

St. Johns County does **not transport or shelter** residents of:

- Assisted Living Facilities
- Convalescent Homes
- Group Facilities
- Nursing Homes

Residents of these communities will look to the management of their facility for an organized group evacuation. Under Florida State Statute 252, it is a requirement of these facilities to have a Comprehensive Emergency Management Plan to evacuate their residents to a predetermined location outside the evacuation area.

If you need evacuation assistance, complete the **St. Johns County Evacuation Assistance Registration Form** on pages 15 - 16.

ST. JOHNS COUNTY EVACUATION ASSISTANCE REGISTRATION FORM



St. Johns County Emergency Management | 100 EOC Drive | St. Augustine, FL 32092
Phone (904) 824-5550 | Fax (904) 824-9920 | www.sjcemergencymanagement.org

The Evacuation Assistance Program is for citizens of St. Johns County who need sheltering assistance during a disaster. Shelters should be your refuge of last resort if you have absolutely nowhere else to go. Residents of nursing homes, convalescent homes, retirement homes, assisted living facilities, or other group facilities, do not qualify for registration in this program. Under Florida State Statute 252 these facilities are required to have a Comprehensive Emergency Plan to evacuate their residents to a predetermined location outside the evacuation area.

This form must be completed in full, and signed, or it will be returned to you. Please print clearly.

PERSONAL INFORMATION:

New Registrant: Yes No Today's Date: _____

Full Name: _____ Gender: _____

Date of Birth: _____ Age: _____ Weight: _____ lbs Does your weight require special transport: Yes or No

Physical Address: _____

Street City Zip

Mailing Address: _____

Street / Post Office Box City Zip

Telephone Number: _____ / _____
Area Code / Primary Phone Number Area Code / Secondary Phone Number

Living Situation: Alone - w/Spouse - Other: _____

Residence Type: - House / Apartment - Mobile Home/RV Primary Language: _____

EMERGENCY CONTACT INFORMATION: (List all that apply)

(Primary) Name: _____ Relationship: _____ Phone: _____

(Secondary) Name: _____ Relationship: _____ Phone: _____

Home Health / Hospice Care: No Yes Agency: _____ Phone: _____

Live in caregiver: No Yes Agency: _____ Phone: _____

MEDICAL INFORMATION: (Check all that apply)

Dementia Alzheimer's Disease Mental Health Impaired
 - Moderate - Advanced - Early / Moderate - Advanced - Controlled - Uncontrolled

- Hearing Aids - Deaf - Legally Blind - Speech Impaired

Wheelchair - Cane
 - Electric - Manual / Standard - Walker

Bedridden Could sleep on cot / air mattress in disaster situation: Yes No

Incontinence Ostomy Care Dialysis Dependent
 - Bladder - Bowel - Colostomy - Ileostomy ↪ times per week _____

Catheter Line Feeding Tube Intravenous Line

BiPAP Machine CPAP Machine Nebulizer Machine

Cardiac VAD System Oxygen Concentrator | Tank Ventilator

- ALS / Amyotrophic Lateral Sclerosis - Multiple Sclerosis - Parkinson's Disease

Additional Medical Information: _____

TRANSPORTATION INFORMATION: (Check all that apply)

Can you / or someone drive you to an Evacuation Shelter: Yes No
Is someone going to the Evacuation Shelter with you: Yes No Name: _____
If you need transportation, what type do you need: - Car / Bus - Wheelchair Van - Stretcher Van

SERVICE ANIMAL INFORMATION (Florida Statute: F.S 413.08 (1) d) | PET INFORMATION: (Check all that apply)

Service Animal Service Animal Type: - Dog - Miniature Horse

Do you have Household Pets that need to be sheltered: - No - Yes Type and number of pets: _____

Animals not permitted at shelters: Exotics, Farm Animals, Wildlife

Applicant Signature & Health Insurance Portability and Accountability Act (HIPAA)

I certify that this information is correct. I understand that based on this application and the data I have provided, St. Johns County Emergency Management (SJCEM) will determine which emergency evacuation assistance, if any, this program may be able to provide. **I understand that there is no cost associated with using any of the County's disaster evacuation centers or disaster transportation services. "However, should my medical condition deteriorate and should I need advanced medical treatment during transportation to or while populating a St. Johns County evacuation shelter I understand I will be responsible for all charges incurred as a result."** I grant permission to medical providers, transportation agencies and other individuals providing me medical care to disclose any information required to respond to my needs.

HIPAA Privacy Rule: As defined in the Health Insurance Portability and Accountability Act (HIPAA) Privacy Rule of 1996, by signing this Authorization, I hereby allow the use or disclosure of my medical information by SJCEM, in order to provide me assistance during emergency evacuations.

I understand that information used or disclosed pursuant to this Authorization, may be subject to disclosure by the recipient for the purposes of evacuation, sheltering, transportation and any medical care pursuant to these services.

I understand that I have the right to revoke this Authorization at any time except to the extent that SJCEM has already acted in reliance on the Authorization. To revoke this Authorization, I understand that I must do so by written request to:

St. Johns County Emergency Management
100 EOC Drive | St. Augustine, Florida 32092
Attention: Evacuation Assistance Registry

I understand that if I choose to revoke this Authorization, I will no longer be part of the Evacuation Assistance Registry and I will be responsible for my own evacuation.

Registrants Signature: _____ **Date:** _____

Person Completing Form: _____ **Relationship:** _____

This Section is to be Completed by St. Johns County Emergency Management

Shelter Status: General Shelter General Pet Shelter Special Medical Needs Shelter
 No Assistance Needed Shelters Can't Support / Advanced Medical Care Needed
Transportation Needed: - Yes - No Evac Zone: _____ Fire Zone: _____
Date Received: _____ **Date Notified:** _____ **Date Removed:** _____

BEFORE THE STORM

The key to protecting life and property, is to prepare before a storm is approaching. Your plan should not only include your pre-season preparations and checklists; it should also include your pre-storm checklists. Having a plan, being prepared and knowing what steps to take will help alleviate stress in an already stressful situation.

PREPARING YOUR HOME / MANUFACTURED HOME / MOBILE HOME

- Install commercial shutters or prepare 5/8" plywood panels for your windows
- Stow and cover irreplaceable items
- Move outside items such as grills, patio furniture and potted plants to safety so they don't become flying debris
- Secure outdoor gates
- Reinforce garage doors
- When you evacuate, consider turning off electricity at the main circuit breaker - especially if your home is susceptible to flooding.
- If your home has natural or propane gas, turn it off at the meter or tank
- Make a final walk-through inspection before leaving

ADDITIONAL SAFETY TIPS FOR PREPARING YOUR MOBILE HOME

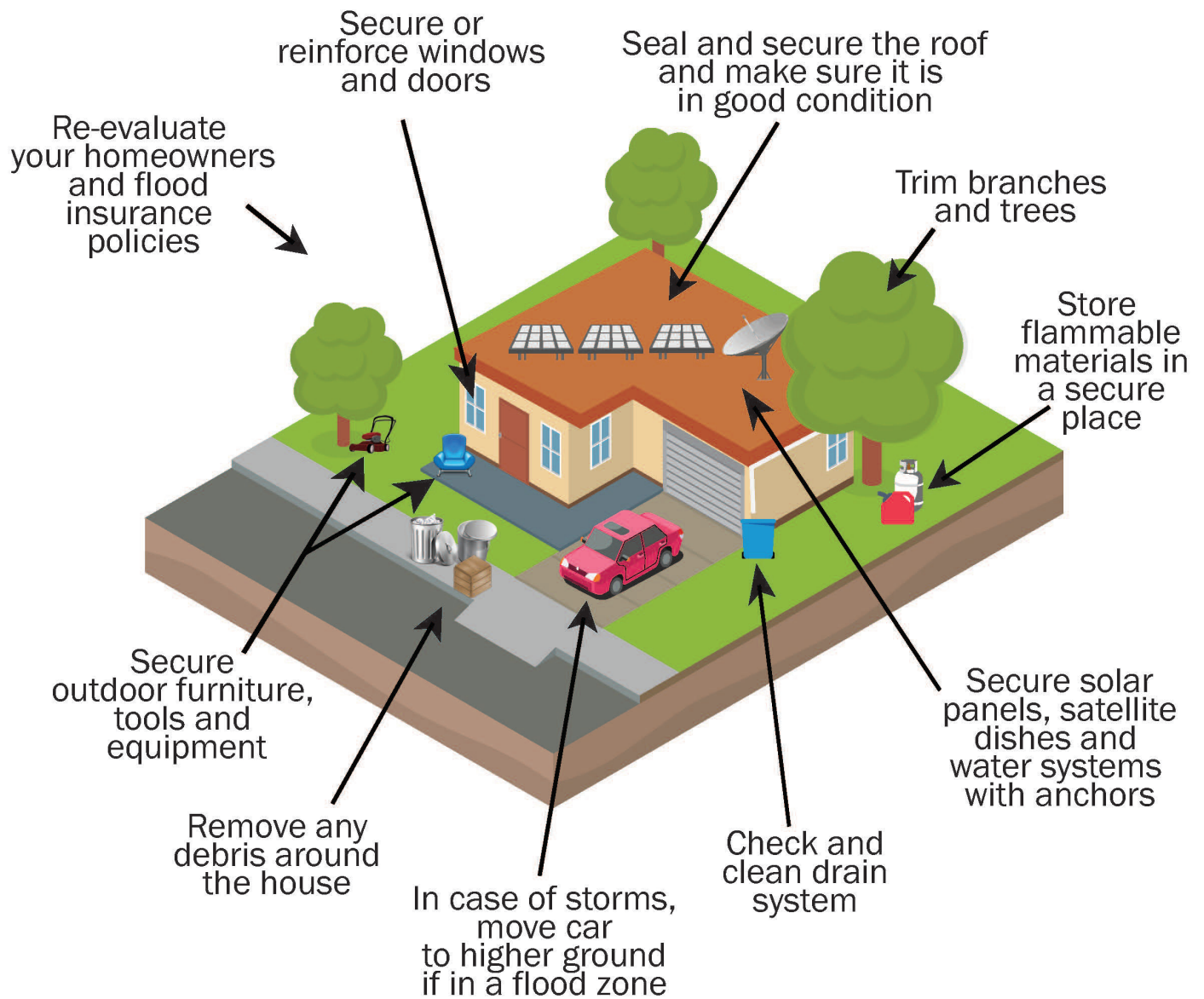
It is recommended you have a mobile home installer who is licensed by the Manufactured Housing Section of the Division of Motorist Services conduct a safety inspection of your home's tie-down system and make any necessary corrections that will afford you maximum protection.

- Check for loose straps.
- Make sure straps are properly aligned and not on an angle.
- Check to be sure the recommended number of tie-downs have been installed properly.
- Verify that ground anchors and stabilizer plates have been installed properly.
- Be sure support piers are in contact with the frame.
- Replace straps or ground anchors that show signs of corrosion or damage.
- For additional protection, you may want to consider installing a longitudinal tie-down system located at the front and rear of your home and add additional diagonal frame tie-downs to the side of your home.

PREPARING YOUR BOAT

Whether you live on your boat, or if it is for recreation only - if a hurricane strikes, proper preparation is the best way to help ensure you and your boat survive. Ideally, you already have a hurricane plan in place for your vessel, but there are a few basic hurricane tips all boaters can use.

- An important step in developing your plan is to review your dock contract for language that may require you to take certain steps or to leave the marina when a hurricane threatens. Ask the marina manager what hurricane plan the marina has in place. Be sure you know your responsibilities and liabilities as well as those of the marina.
- Keep all pertinent documents with you: Insurance policies, photos or video of your vessel, boat registration, inventory list, lease agreement with the marina or storage area, etc.
- Secure your boat properly
- Plan to remove valuable equipment from your boat
- Remove all movable equipment
- Lash down everything you cannot remove
- Seal all openings to make as watertight as possible



ST. JOHNS COUNTY SANDBAG OPERATIONS

- Distribution sites will be strategically located throughout St. Johns County according to the projected storm impacts
- The County will provide 20 sandbags to residents of St. Johns County and the material to fill them
- Residents of St. Johns County should bring a shovel and gloves to fill and load their sandbags



Please see the link below for our sandbag location map. Location icons will change to green identifying that sandbags are available at that location.

Sandbag Pick-Up Location Map

<http://arcg.is/1CjPC4>

Prior to a storm - it will be announced when sandbags are available.

Sandbag Map Legend

-  Available For Pick-UP
-  NON-Available



MANDATORY EVACUATION / CURFEW

A mandatory evacuation is a protective action to help save lives when a clear danger to life exists. It is a “mandatory” evacuation order because once issued, under Florida State Statute 252.36 (5) (e), evacuation is required. Returning to an evacuated area before the evacuation order is lifted is also prohibited under this law.

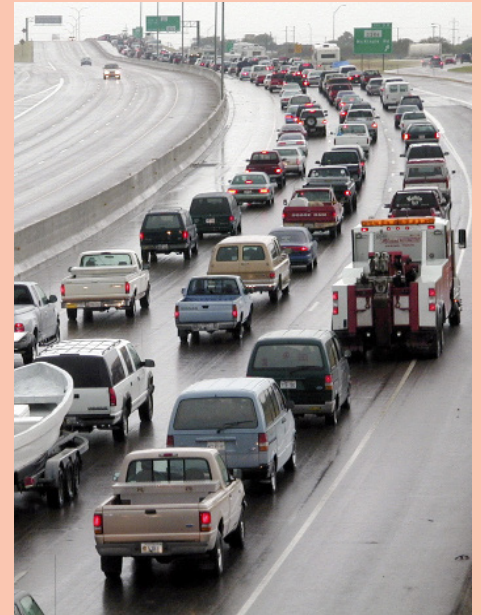
Evacuated areas are generally placed under a curfew, prohibiting movement within the area until the curfew is lifted.

Curfews restrict movement during specified times to minimize risk to person and property.

VEHICLE TRAFFIC / TRAVEL

When an evacuation order is given, leave in a timely manner. The longer you delay, the longer your travel time.

- Be sure your vehicle is properly fueled
- If possible, take one vehicle per household. This keeps family together and reduces the number of vehicles on the road
- Traveling with children - pack snacks and items to keep them entertained
- Traveling with the elderly and / or someone with a special need - bring ample medications and oxygen as travel can be slow



EVACUATIONS SAVE LIVES

- An Evacuation Order means that life-threatening conditions are possible in your area.
- You will not be ordered to evacuate unless there is a real threat to your well-being, or the possibility that you might become stranded where help could not reach you.
- When you are told to evacuate, do so immediately.
- Sometimes 10 miles is enough. Think 10s of miles, not 100s of miles.
- Your safety, and the safety of others, may depend on it.

DESIGNATED EVACUATION ROUTES FOR ST. JOHNS COUNTY

- **City of St. Augustine: (On the mainland)** North on US-1, turn West onto SR-16 or proceed South-West on SR-207 or South on US-1, proceed to I-95 or points West.
- **City of St. Augustine: (Davis Shores, Anastasia Island South to St. Augustine Alligator Farm)** SR-A1A, proceed West across Bridge of Lions, to US-1 North or US-1 South and / or to SR-16, or SR-207 to I-95 or points West.
- **City of St. Augustine and Anastasia Island North of the St. Augustine Amphitheater:** Proceed North on SR-A1A across the Bridge of Lions, then West.
- **City of St. Augustine and Anastasia Island South of the St. Augustine Amphitheater:** Proceed South on SR-A1A, turn West on SR-312, proceed across 312 Bridge to SR-207, proceed to I-95 or points West.
- **City of St. Augustine Beach:** North to SR-312, proceed across 312 Bridge to SR-207, proceed to I-95 or points West.
- **From the intersection of Ocean Trace Rd. and A1A to Crescent Beach:** South on SR-A1A to Crescent Beach, turn West on SR-206, proceed across Crescent Beach Bridge to US-1, proceed to I-95 or points West.
- **Crescent Beach to Flagler County Line:** North on SR-A1A to Crescent Beach, turn West on SR-206, proceed across Crescent Beach Bridge to US-1, proceed to I-95 or points West.
- **Palm Valley / Nocatee area:** Proceed South-West to CR-210, proceed to I-95 or points West.
- **Ponte Vedra Beach / Sawgrass:** North on SR-A1A, turn West onto Butler Blvd., proceed to I-95 or points West.
- **On coast halfway between Micklers Landing & South Ponte Vedra Beach:** North of Guana Dam, go North to SR-A1A, proceed West across Palm Valley Bridge on CR-210. South of Guana Dam, go South on SR-A1A, proceed West across Vilano Bridge. Continue West on SR-16 to I-95 or points West.



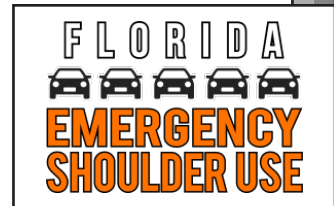
ST. JOHNS RIVER

- **SR-13 North of CR-210:** Proceed East along CR-210 or Greenbriar Road to I-95; or North along SR-13 into Duval County; or east on Racetrack Road to areas outside the evacuation zone.
- **SR-13 North of CR-214:** Proceed East along CR-208 or SR-16 to I-95; or West along SR-16 across the Shands Bridge; or East on CR-214 to areas outside the evacuation zone.
- **CR-13 South of CR-214:** Proceed East along SR-207 or SR-206 to I-95; or West along SR-207 into Putnam County; or east on CR-214 to areas outside the evacuation zone.



Emergency Shoulder Use (ESU) is Florida’s innovative strategy to increase traffic capacity during major hurricane evacuations using existing paved shoulders. Covering key corridors within the state, ESU plans replace the former one-way plans, also known as contraflow and reverse laning.

ESU PLANS COVER THE FOLLOWING ROADWAY SEGMENTS:



- **Interstate 4**
Eastbound from Tampa (Hillsborough County) to Kissimmee (Osceola County)
- **Interstate 10**
Westbound From Jacksonville (Duval County) To Tallahassee (Leon County)
- **Interstate 75**
Northbound from Naples (Collier County) to the Georgia State Line (Hamilton County)
- **Interstate 75 Alligator Alley**
Northbound from Weston (Broward County) to Naples (Collier County)
Southbound from Naples (Collier County) to Weston (Broward County)
- **Interstate 95**
Northbound from Fort Pierce (Saint Lucie County) to Jacksonville (Duval County)
- **Turnpike**
Northbound from Winter Garden (Orange County) to Wildwood (Sumter County)

ESU was first implemented during Hurricane Irma in September 2017. Evacuees were able to drive on the inside shoulder of I-75 from Wildwood to the Georgia State Line and on I-4 from Tampa to Kissimmee.

Real-time traffic information is always available by visiting fl511.com or calling 511

WHAT IF I DON'T EVACUATE

- If you do not evacuate when ordered, you may be on your own during a disaster
- Emergency Responders will follow mandatory evacuation orders and may not be able to help those who do not evacuate
- Roads may be inaccessible due to water, debris, or other hazards
- Depending on the damage received from a storm, roads could be inaccessible for an extended period of time
- You may be left without electricity, internet, phone service and water

GENERAL SHELTERS

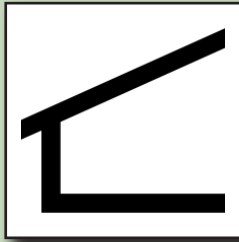


Sheltering During A Disaster

Taking shelter is necessary in many emergencies. Your Disaster Plan should include your Sheltering Plan. Will you be sheltering outside the evacuation area or at one of the local evacuation shelters? If you plan to use one of the local shelters, familiarize yourself with their locations. By planning for several destinations, you have options when an evacuation is ordered.

The length of time you are required to shelter will vary depending on the hazard. You may be required to shelter for a brief period, or you may be required to shelter for an extended period. You should be prepared for either situation.

Mass Care Sheltering will involve living with many people in a confined space. There will be little privacy, which can prove to be difficult and unpleasant. It is important for all shelterees to be considerate of one another and to cooperate with shelter managers and staff to make your stay as pleasant, and stress free as possible.



IF YOU LIVE IN AN EVACUATION ZONE AND ARE ORDERED TO EVACUATE
DO SO IMMEDIATELY - EVACUATIONS SAVE LIVES

General Shelter Supply Kit

- Cot or air mattress, blankets, sheets and pillows. Bring these items for your comfort, **there are no cots available at the general shelters.**
- Drinks and snack foods are suggested to help between meals. If you require specialized foods, you must bring it.
- 3-5 day supply of medications and supplies. If you are a diabetic on insulin, bring a small cooler for your insulin (or any refrigerated medications).
- Baby food and diapers for infants
- Toiletries: Brush, comb, deodorant, depends, feminine products, soap, towel, washcloth, shampoo, shaving supplies, toothbrush, toothpaste, etc.
- Extra clothing, rain gear, closed toed shoes
- Eye glasses, hearing aids, batteries
- Cane, walker, wheelchair
- Entertainment items: cards, toys, games, books, magazines, etc.
- Electronics: Cellphones, laptops, tablets, charging cables

GENERAL SHELTERS

Bartram Trail High School

7399 Longleaf Pine Parkway
St. Johns, FL 32259

Creekside High School

100 Knights Lane
St. Johns, FL 32259

Cunningham Creek Elementary School

1205 Roberts Road
St. Johns, FL 32259

Durbin Creek Elementary School

4100 Race Track Road
St. Johns, FL 32259

Fruit Cove Middle School

3180 Race Track Road
St. Johns, FL 32259

Hickory Creek Elementary School

235 Hickory Creek Trail
St. Johns, FL 32259

Mill Creek Elementary School

3750 International Golf Parkway
St. Augustine, FL 32092

Osceola Elementary School

1605 Osceola Elementary Road
St. Augustine, FL 32084

Otis Mason Elementary School

207 Mason Manatee Way
St. Augustine, FL 32086

Patriot Oaks Academy

475 Longleaf Pine Parkway
St. Johns, FL 32259

Pedro Menendez High School

600 SR-206 West
St. Augustine, FL 32086

BARTRAM TRAIL



CUNNINGHAM CREEK



FRUIT COVE



MILL CREEK



OTIS MASON



PEDRO MENENDEZ



CREEKSIDE



DURBIN CREEK



HICKORY CREEK



OSCEOLA



PATRIOT OAKS

PET FRIENDLY SHELTERS

Pet Friendly Shelter Supply Kit

Your pet should be current on vaccinations and wearing proper identification tag and rabies tag.

Your pet will be housed in a separate designated area of the shelter.

You are responsible for the care and cleanliness of your pet during your stay at the shelter.

You will need to bring your shelter supplies as well as the following supplies for your pet:

- Appropriately sized crate / carrier and bedding
- Food, water and bowls
- Collar, leash, harness - and muzzle if needed
- Pet meds and first aid kit for your pet
- Pet comfort items such as blankets and toys
- Current picture of you and your pet together
- Label all pet supplies with your name, address and phone number

Pets Allowed at Pet Friendly Shelters

If you plan to shelter with your pet, you will go to one of our Pet Friendly Shelters. While at the shelter your pet will remain kenneled except during exercise and relief periods.

Acceptable Pets

- Birds
- Cats
- Dogs
- Pocket Pets
- Rabbits

Animals Not Permitted

- Exotics (insects, primates, snakes)
- Farm Animals
- Wildlife

SERVICE ANIMALS ARE ALLOWED AT ALL SHELTERS

Per Florida State Statute 413.08 (1) a service animal is a “dog” or a “miniature horse”.



Timberlin Creek Elementary School
555 Pine Tree Lane | St. Augustine, FL 32092



South Woods Elementary School
4750 SR-206 West | Elkton, FL 32033



Know The Shelter Locations

- Public Schools in St. Johns County serve as our communities evacuations shelters.
- As part of your Disaster Plan, you should familiarize yourself with the shelter locations within our County.
- Remember, the school closest to your home may not be a Hurricane Shelter.

SPECIAL MEDICAL NEEDS SHELTERS

IMPORTANT NOTE

The Special Medical Needs Shelter is not a hospital or nursing home. **It is not** for people who need 24-hour dedicated care, who require hospital beds, ventilators, or have other complex medical needs. If you require complex medical care you should plan to stay at a specialized facility outside the evacuation area.

Special Medical Needs Shelter Kit

Begin by gathering the basic shelter supplies found on the General Shelter Supply List. Then, depending on your medical needs, bring any of the following items you will need:

- Caregiver: If you require help with basic tasks, you **must** bring a caregiver with you to a Shelter
- Cane / Walker / Wheelchair / Electric Convenience Vehicle (ECV)
 - Patch kit and extra inner tubes for wheelchair
 - Extra battery and / or converter for charging ECV
- Hearing / Speech / Visual Impairments
 - Extra batteries for hearing aids
 - Pencil and paper for communicating emergency information
 - Preprinted key phrases you would use in an emergency
 - Talking or Braille clock, extra white cane, magnifier and glasses
- Medical Alert Bracelets / Tags
 - A written description of your needs if you are unable to describe them in an emergency
- All medical equipment you use regularly **must** be brought with you to the Shelter
 - BiPaps, CPAPs, nebulizers, oxygen concentrator and / or tanks
 - Catheter supplies, ostomy supplies
- Prescriptions and a list of all your current medications
 - List of your allergies and health history
- Medical insurance cards, Medicare / Medicaid cards

Identification labels should be put on all medical equipment (nebulizers, oxygen, walkers, wheelchairs, etc.) you take with you to the shelter.



Freedom Crossing Academy School
1365 Shetland Drive | St. Johns, FL 32259

Special Medical Needs Shelter Directions

» State Road 13 S and Race Track Rd

Starting at SR-13 S and Race Track Rd, travel South on Race Track Rd, turn left on Roberts Rd, turn left on Longleaf Pine Pkwy, turn right on Shetland Dr. Freedom Crossing Academy is on the Right (West).

» US-1 North and CR-210 W

Starting at US-1 N and CR-210 W travel West on CR-210 W, turn right on Russell Sampson Rd, at the traffic circle, take the 2nd exit to stay on Russell Sampson Rd, continue through intersection at St. Johns Pkwy as the road becomes Longleaf Pine Pkwy, turn left on Shetland Dr. Freedom Crossing Academy is on the Right (West).



Pacetti Bay Middle School
245 Meadowlark Lane | St. Augustine, FL 32092

Special Medical Needs Shelter Directions

» I-95 and SR-16

Starting at I-95 and SR-16 travel West on SR-16, turn left (South) at Pacetti Rd/CR-13A, turn right (West) on Meadowlark Lane, travel West on Meadowlark Lane. Pacetti Bay Middle School is on the left (South).

» US-1 North and International Golf Parkway

Starting at US-1 N and IGP travel West on IGP to the intersection of SR-16 and Pacetti Rd, continue traveling West Southwest on Pacetti Rd, turn right (West) on Meadowlark Lane. Pacetti Bay Middle School is on the left (South).



RECOVERY

RE-ENTRY

The most important things to know about re-entry are:

- Local Officials want you back in your home as much as you want to return.
- **DO NOT** return until advised it is safe to do so. An all clear will be announced by local officials when it is safe to return.

Post-Impact, the following public safety actions must take place:

- Complete Search and Rescue
- Inspect Bridges / Inspect collapsing buildings
- Clear roads / powerlines / biological and chemical hazards
- Remove barricades
- Begin power and water restoration

For your safety wait for the evacuation order to be lifted before starting for home. When returning home watch for signage indicating the status of bridges and roadways. Announcements are made through television, radio and social media outlets.

AFTER THE STORM - POINTS TO REMEMBER

- Avoid driving. Roads must be kept clear for emergency vehicles.
- Have valid identification with your current address with you as this may be required at security operations check points.
- Use your telephone for emergency purposes only. Keep lines open for emergency communications.
- Beware of snakes, insects, or other animals driven to higher grounds by flooding.
- Enter your home with caution. Open windows and doors to ventilate and dry your home if necessary.
- If there has been flooding, have an electrician inspect your home or business before turning on the breaker.
- Be careful with fire. If your home or business uses gas, do not strike a match until you are sure there are no gas leaks. Avoid candles. Use battery operated flashlight and lanterns instead.
- Avoid downed or dangling utility wires, especially when cutting or clearing fallen trees. Call professionals to remove large uprooted trees.
- Water Precautions - Whenever widespread flooding occurs, there is potential for bacterial contamination. Disinfect any tap water you use for cooking and cleaning. Bring water to a boil for five minutes or use chemicals (eight drops of chlorine bleach or iodine per gallon) or water purification tablets as directed. Continue to do so until official announcement of water safety.
- Take photographs of all damage before repairs begin, and keep all receipts for insurance purposes.
- Protect yourself from Contractor Fraud - Only hire a licensed contractor. Be cautious of anyone coming to your home uninvited and offering to do repairs. Obtain a written estimate or contract for work to be completed. Do not pay in full before work begins or pay the final balance until work is completed to your satisfaction. Do not pull permits for the contractor as this may be an indication that they are not properly licensed. Visit www.myfloridalicense.com to check if a contractor is licensed. Report potential fraud to the State of Florida Consumer Fraud hot-line at 1-866-966-7226.
- Be Patient. It will take time for things to return to normal.

ST. JOHNS COUNTY DEBRIS OPERATIONS

COLLECTIONS PRIOR TO A DECLARED STORM EVENT

In the event of any weather-related incidents, regularly scheduled garbage, recycling and yard waste collections are performed and remain in effect **until sustained winds reach 35 mph, provided there are no road or bridge closures**. If normal operations are suspended, move all garbage, recycling and yard debris immediately to a secure area so they do not become projectiles.

In the case of impending storm conditions, please check our website www.recyclestjohns.com for messages or tune to your local media for updates or announcements of changes to your collection schedule.

EMERGENCY STORM DEBRIS COLLECTIONS

St. Johns County's emergency debris hauler will begin collecting debris from the right-of-way after a storm. The contractor will make multiple passes through neighborhoods to ensure all storm-related debris is collected. Residents are encouraged to move storm debris curbside until the clean-up is complete.

Please adhere to the following information to assist the County in its recovery efforts.

- Place storm debris in piles along the curbside.
- Pile storm-related debris un-bagged at the curb. (NO leaves or small items)
- Place storm debris at least three feet from utility boxes, mailboxes, poles, fire hydrants and other obstacles.
- Separate vegetation from all other storm-related debris
- Normal household garbage, recycling, and bagged debris of any kind will not be picked up with storm debris. Please continue to follow your normal garbage removal schedule.
- No chemicals or hazardous waste will be collected curbside. All hazardous waste may be brought to Tillman Ridge or Stratton Road Transfer Stations for disposal during operating hours.

Clean-Up Dates: After a hurricane, listen to local media for updates. St. Johns County will issue press releases and post clean-up dates on the County's website, and/or advertise in the local newspaper. **Ensure that all material is at the curb for pick up at the time of the announced date.** Clean-up crews will proceed from street to street and collect only debris placed at the curb. Emergency access roadways will be cleared first. This is a large-scale operation and your patience is greatly appreciated.

Remember, in a severe storm, the entire county could be covered with debris. Please have patience. We will be working in the hardest-hit areas first and will pick up your debris as quickly as we can.

POST-HURRICANE RESIDENTIAL COLLECTIONS

Our residential service providers, Republic Services and Advanced Disposal are collecting all bagged and containerized debris on scheduled service days.

Normal yard debris includes the following:

- Grass clippings and leaves placed in cans no larger than 32 gallons, or sealed in plastic bags no more than 50lbs.
- Small vegetative debris, twigs, and branches.
- Do not place near storm-related debris.

Please continue to follow your normal garbage, recycling, and yard debris schedule and guidelines.

NEED MORE INFORMATION?

Please visit www.recyclestjohns.com or call (904) 827-6980



COMMUNICATING DURING AN EMERGENCY

FCC / FEMA Tips for Communicating During an Emergency

Preparing for an Emergency

1. Understand how power outages may affect your landline service
2. Charge your wireless phone, laptop, or tablet if a storm is coming
3. Be prepared to monitor news and emergency broadcasts during power outages
4. Create a family emergency communication plan
5. Sign up to receive alerts and warnings
6. Create an “in case of emergency” contact on your wireless phone
7. Inform your emergency contact of medical issues
8. Create an emergency contact list on mobile phones and devices
9. Write down important phone numbers
10. Make sure family and other contacts know how to send mobile texts

During an Emergency

1. Limit non-emergency phone calls
2. Try texting in non-emergency situations
3. Adjust your wireless phone to conserve battery power
4. Call 911 only for emergencies
5. Wait 10 seconds before redialing calls that don't connect
6. If evacuated, forward your home number to your wireless phone

For further information visit: www.fcc.gov/emergency

POWER UTILITIES

Beaches Energy Services



Beaches Energy Services is committed to restoring power to our customers safely and as quickly as possible during power outages. Quick action is taken to restore power to emergency services and critical infrastructure such as hospitals, law enforcement, fire departments and water treatment facilities. Beaches Energy crews will locate downed power lines and make sure electricity is no longer flowing through the lines. The crews will ride out our transmission lines checking for downed trees that may need to be removed in order to restore power to our substations. We work to get the largest number of customers back on with public safety being our first priority.

To report an outage or trouble with utility service, Beaches Energy Services provides a 24-hour emergency line at 904-247-6171. Customers can follow us on Facebook and Twitter for periodic updates on power restoration. At this time, we do not have an outage map available.

Beachesenergy.com

Facebook.com/BeachesEnergy

Twitter.com/BeachesEnergy

Florida Power & Light



After the Storm: Restoring your Power How FPL restores power

After a storm, our crews work around the clock to restore your power safely and as quickly as possible. Here's how our proven restoration process works:

- FPL starts by repairing any damage to our power plants and the power lines that carry electricity from our plants to the local substations.
- Simultaneously, FPL restores power to facilities that provide essential services to our communities, such as hospitals, and police and fire stations.
- At the same time, FPL works to return service to the largest number of customers in the shortest amount of time.
- From here, FPL repairs the infrastructure serving smaller groups and neighborhoods, converging on the hardest hit areas until every customer's power is restored.

Reporting an Outage

When outages occur, FPL understands that their customers need information about when their power will be restored.

After a major storm, FPL will know if damage to main power lines has interrupted your service. Stay tuned to local radio and TV for specific reports on FPL's progress in assessing and repairing damage to the electrical system in your area.

Please help us keep the phone lines open for emergencies by calling FPL only to report dangerous situations such as downed power lines or sparking electrical equipment.

If your neighborhood gets power back after a storm but you're still without power, please contact FPL at: [FPL.com/outage](https://www.fpl.com/outage) or 800-4-OUTAGE (800-468-8243).

Stay Informed

FPL has many ways to help you stay informed during storm season:

STORM CENTER

[FPL.com/storm](https://www.fpl.com/storm)

YOUTUBE

[YouTube.com/FPL](https://www.youtube.com/FPL)

TWITTER

[Twitter.com/insideFPL](https://twitter.com/insideFPL)

FACEBOOK

[Facebook.com/FPLconnect](https://www.facebook.com/FPLconnect)

And as always, stay tuned to local radio, TV and newspapers for updates and alerts.



Restoration 1-2-3

JEA's process for restoring power

At JEA, storm preparation happens all year round, as the utility works to ensure its facilities and the community are prepared for hurricanes and other weather-related emergencies.

When a major storm is predicted, JEA goes into emergency operations mode, with all 2,000 JEA employees assuming storm assignments that are staffed 24/7 until the emergency declaration is lifted. Once the height of the storm passes and weather reports indicate it is safe, JEA immediately enters the restoration phase of its emergency operations. JEA's Restoration 1-2-3 process is designed to assess and repair its facilities and restore power to all customers as quickly and safely as possible.

Restoration 1-2-3

1: Public Safety

As soon as weather conditions permit, JEA begins Phase 1 by assessing its facilities, making critical repairs to power plants, transmission lines, substations, and water and sewer facilities. JEA then restores power to local hospitals, shelters, and police and fire stations.

2: Individual Customers

With public safety repairs complete, JEA enters Phase 2, at which time the utility is ready to accept outage reports from individual customers. Utility crews begin making repairs by electric "circuits" – repairing an entire circuit of approximately 2,500 homes before moving on to another circuit. Priority is given to circuit repairs that will restore power to the most customers at one time.

Phase 3: Final Repairs

When repairs to all major circuits are complete, JEA will enter Phase 3 by targeting the few remaining isolated outages, working until power has been restored to all affected customers.

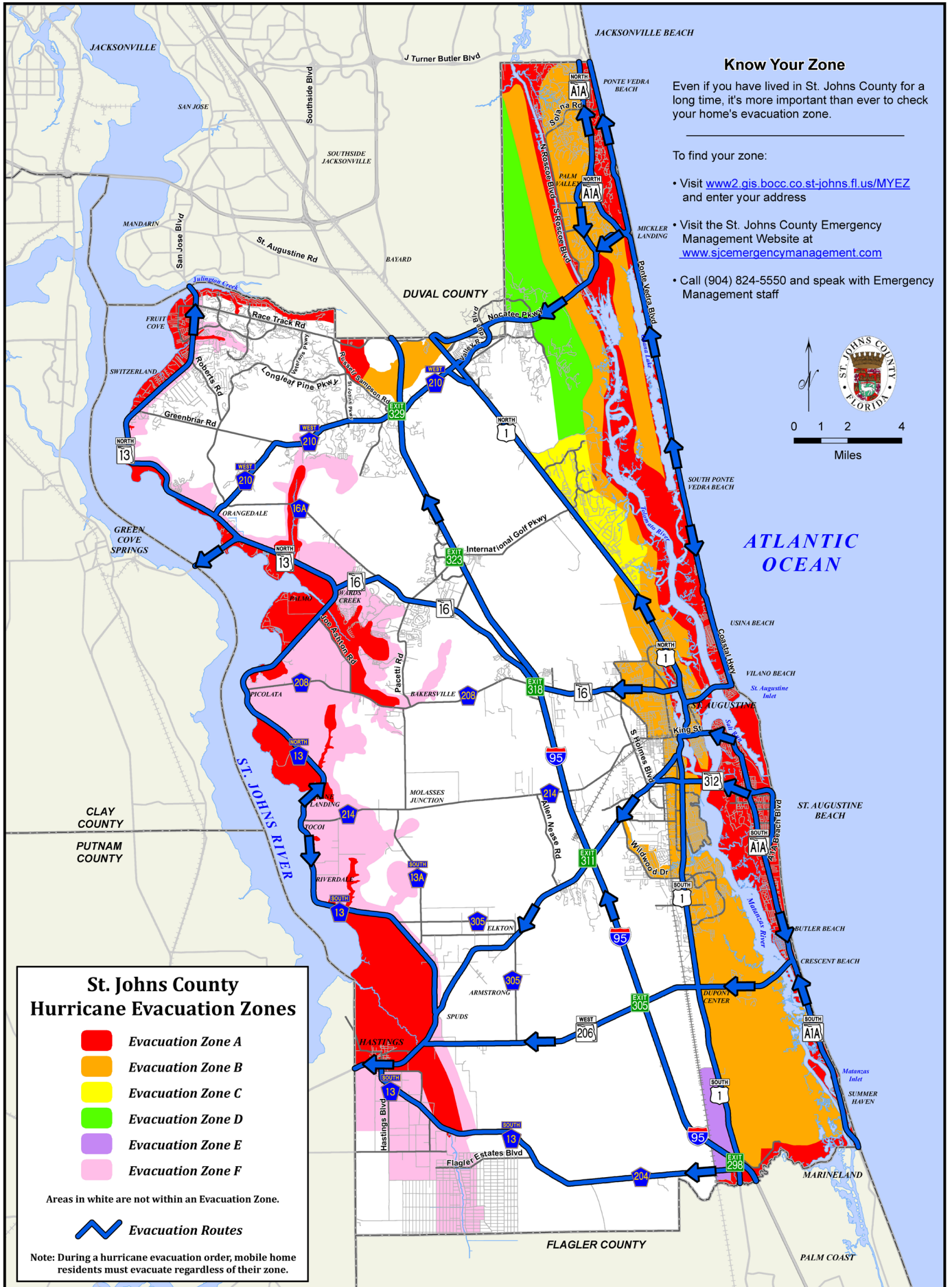
What You Can Do

Local residents can help JEA restore power quickly and safely by following a few simple tips:

- **Stay Informed:** Sign up for outage alerts at jea.com
- **Stay safe:** Stay off the roads and avoid downed power lines
- **Be patient:** Wait until Phase 2 to report your power outage
- **Get assistance:** Call (904) 665-6000 to report outages, downed power lines and more

Learn more at jea.com/outage

ST. JOHNS COUNTY HURRICANE EVACUATION ZONES



St. Johns County Emergency Management HURRICANE PREPAREDNESS GUIDE

OFFICIAL GUIDE FOR ST. JOHNS COUNTY



St. Johns County Emergency Management

100 EOC Drive

St. Augustine, Florida 32092

Phone: 904-824-5550

Fax: 904-824-9920

Website: www.sjcemergencymanagement.org

Facebook: www.facebook.com/StJohnsEOC

Twitter: [@StJohnsEOC](https://twitter.com/StJohnsEOC)

